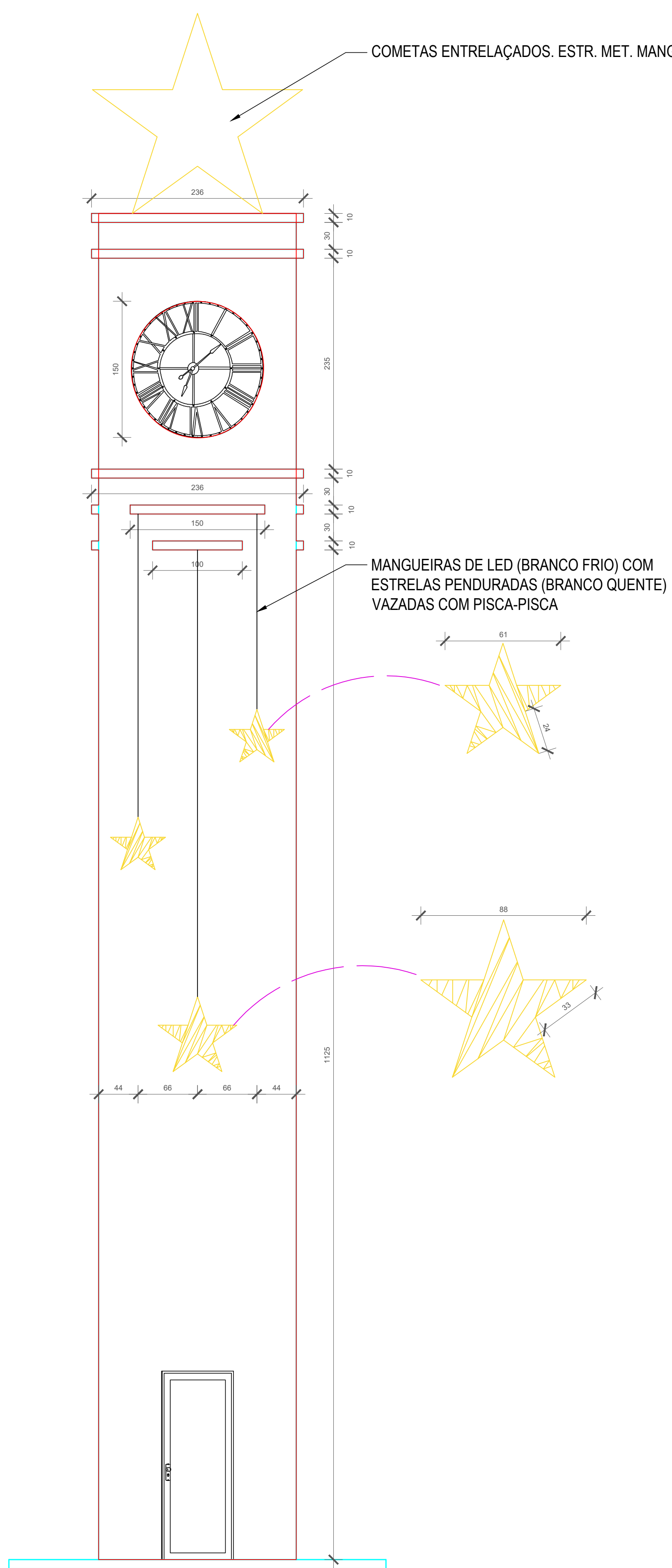
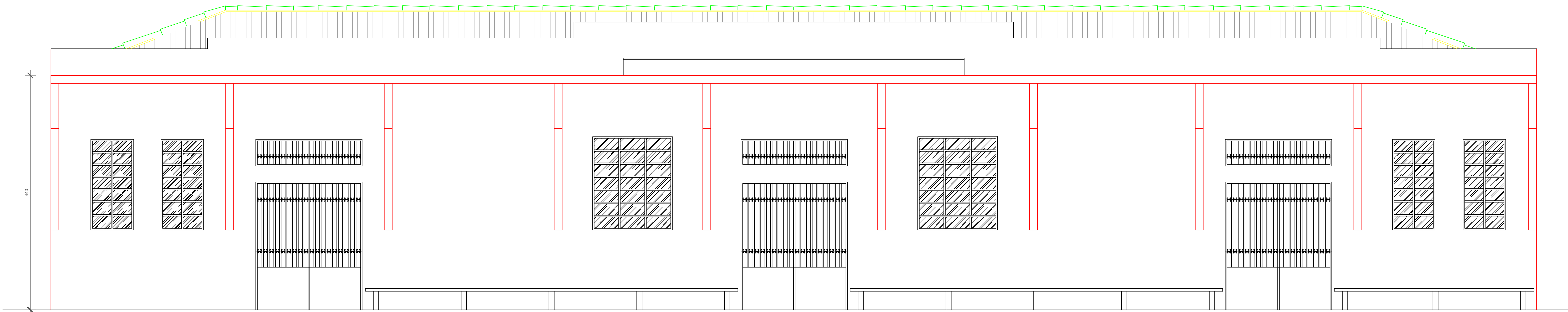


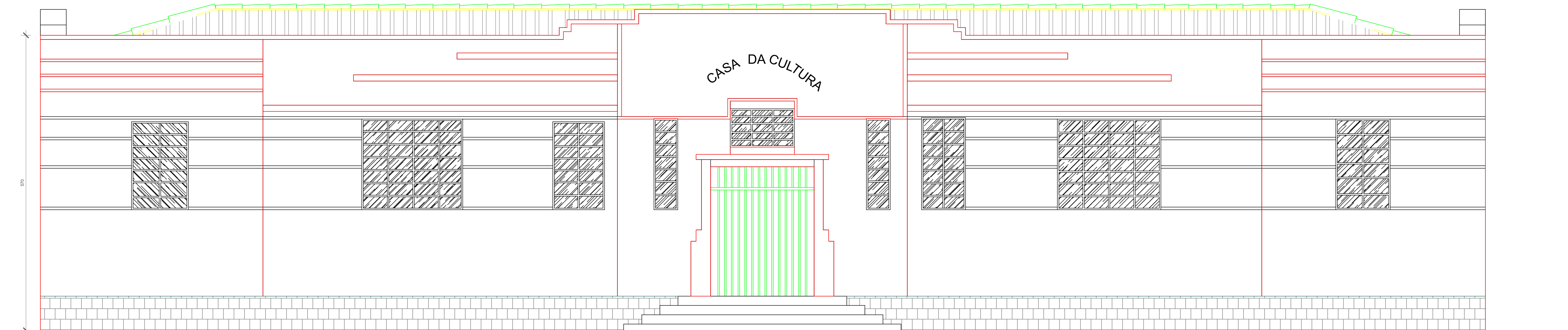
TORRE RELÓGIO/ESTAÇÃO - Trocar os LEDs e acrescentar estrelas na Torre (dos 4 lados)



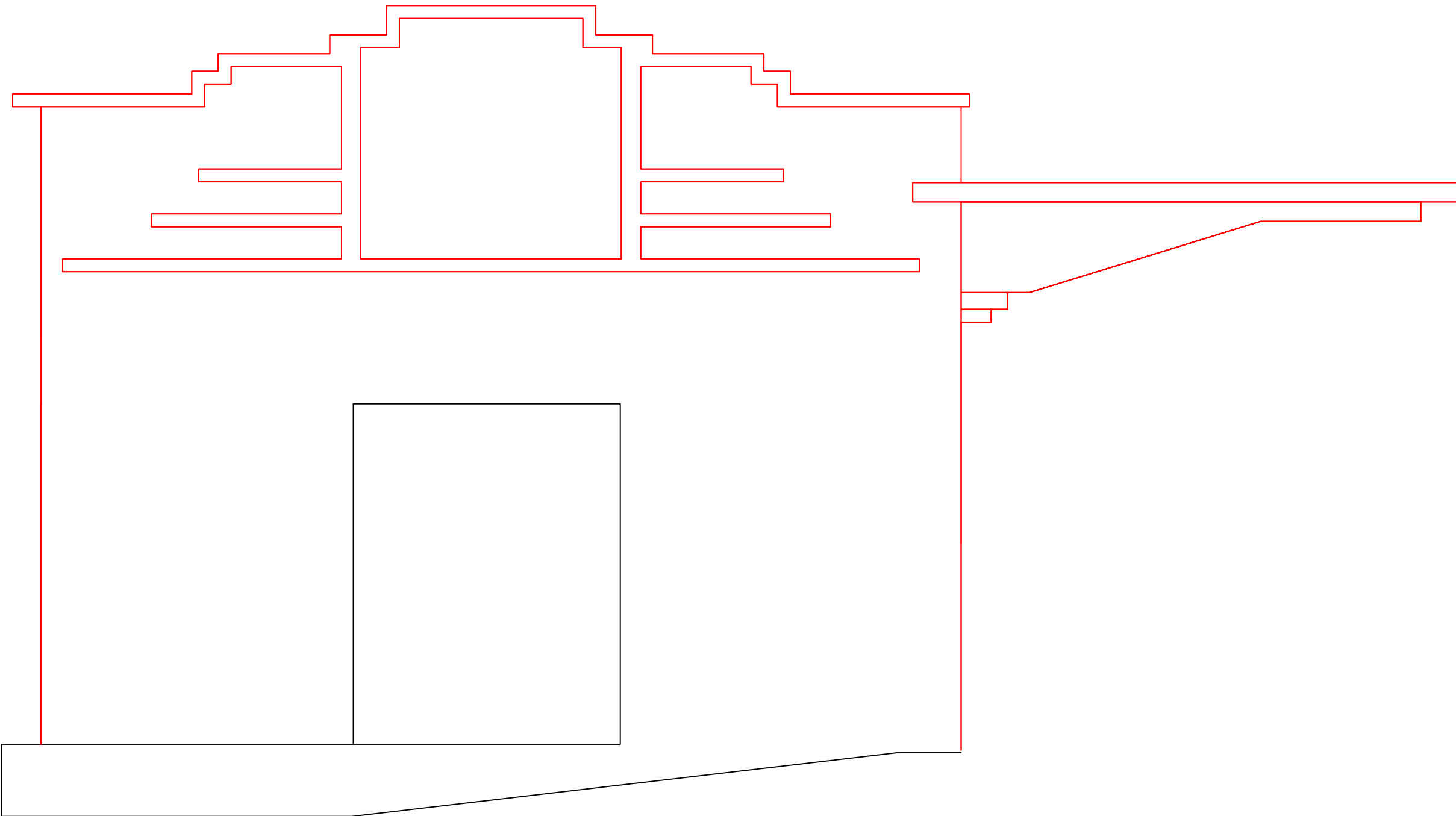
TORRE REL.
ESC. 1:50



FACHADA 01
ESC. 1:50



FACHADA 02
ESC. 1:50



FACHADA 03 (REPETE DO OUTRO LADO)
ESC. 1:50

TORRE E CASA DA CULTURA CONTORNADOS COM
LED BRANCO QUENTE CONTROLE SEQUENCIAL

OBS: LINHA VERMELHA DEFINE ONDE IRÃO AS MANGUEIRAS
DE LED (COR BRANCO QUENTE)