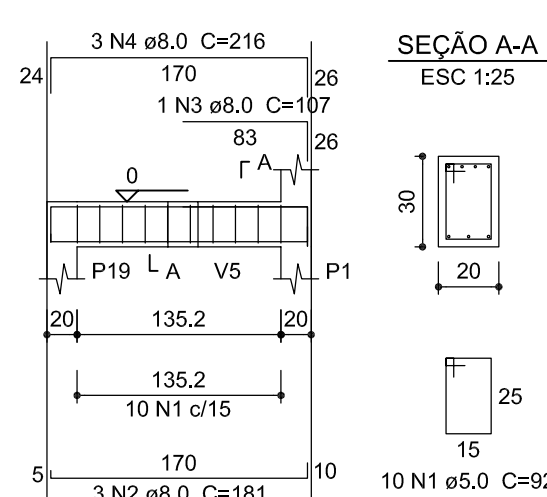
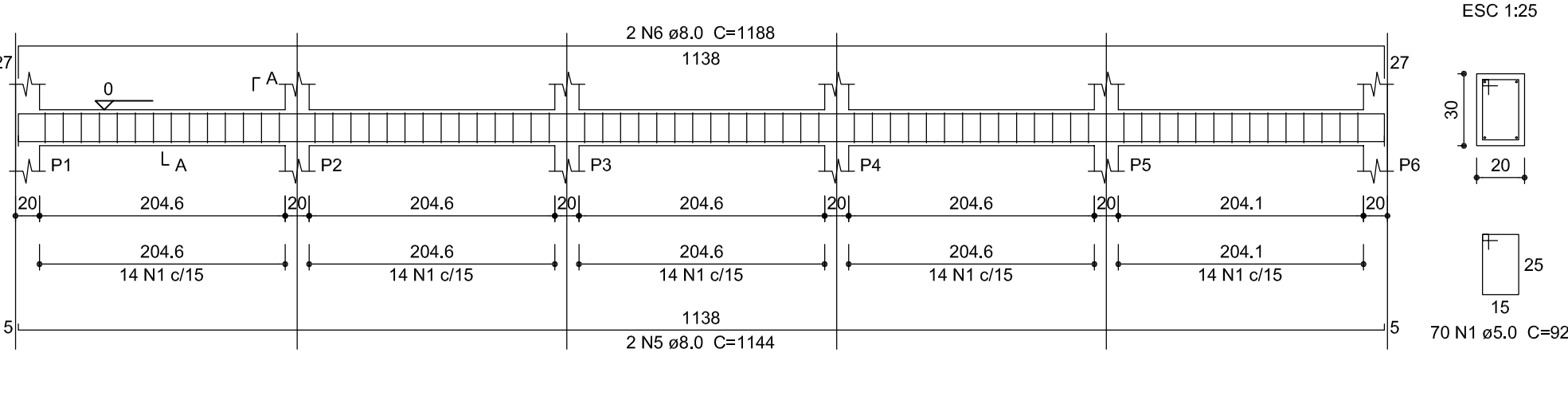


Forma da Fundação (Nível 0)
Escala 1:50

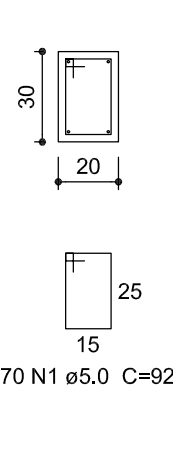
V1
ESC 1:50



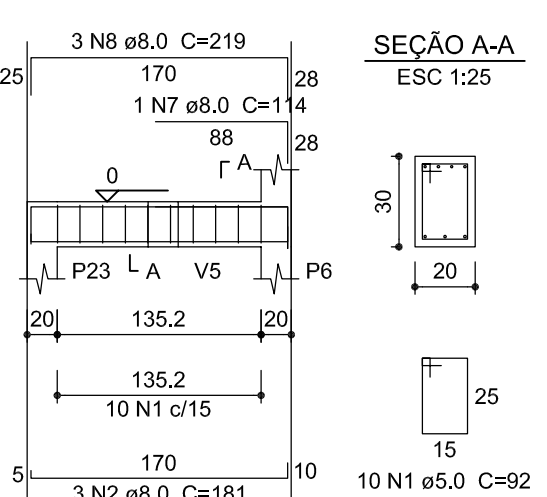
V2
ESC 1:50



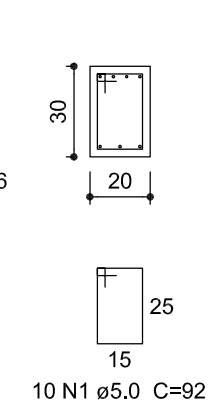
SEÇÃO A-A
ESC 1:25



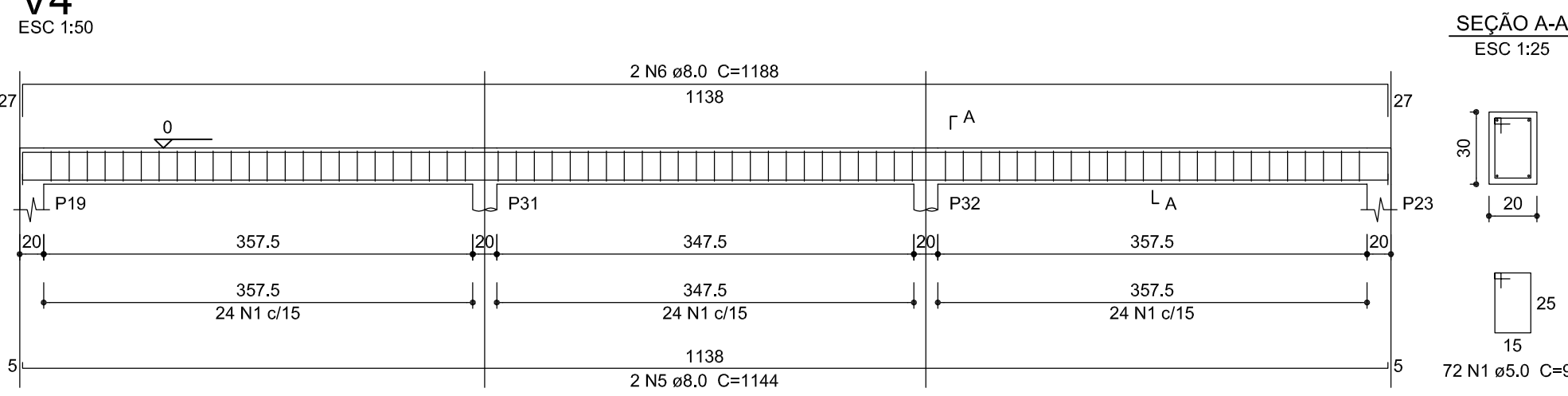
V3
ESC 1:50



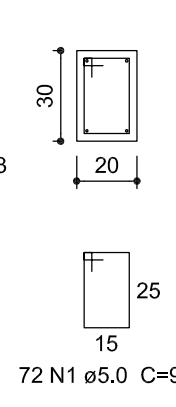
SEÇÃO A-A
ESC 1:25



V4
ESC 1:50

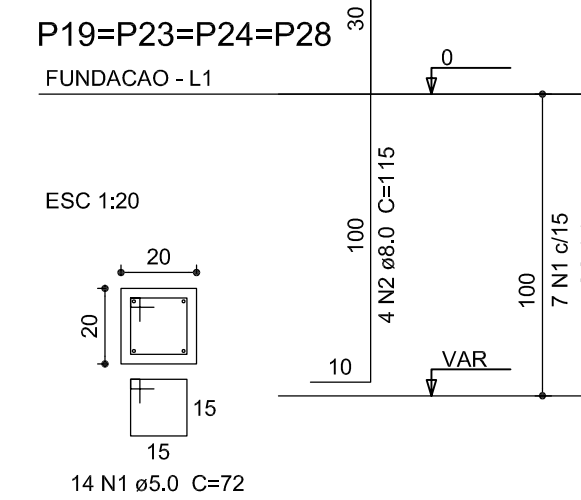
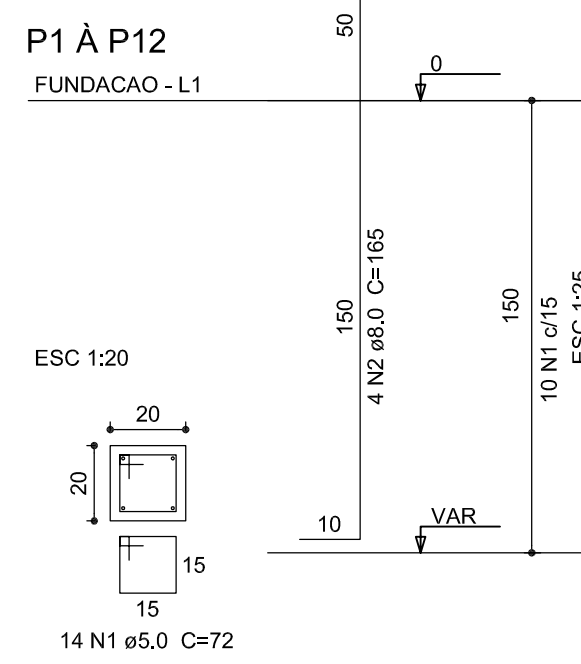


SEÇÃO A-A
ESC 1:25



Legenda dos Planos			
	Pilar que morre		
	Pilar que passa		
	Pilar que nasce		
	Pilar com mudança de seção		

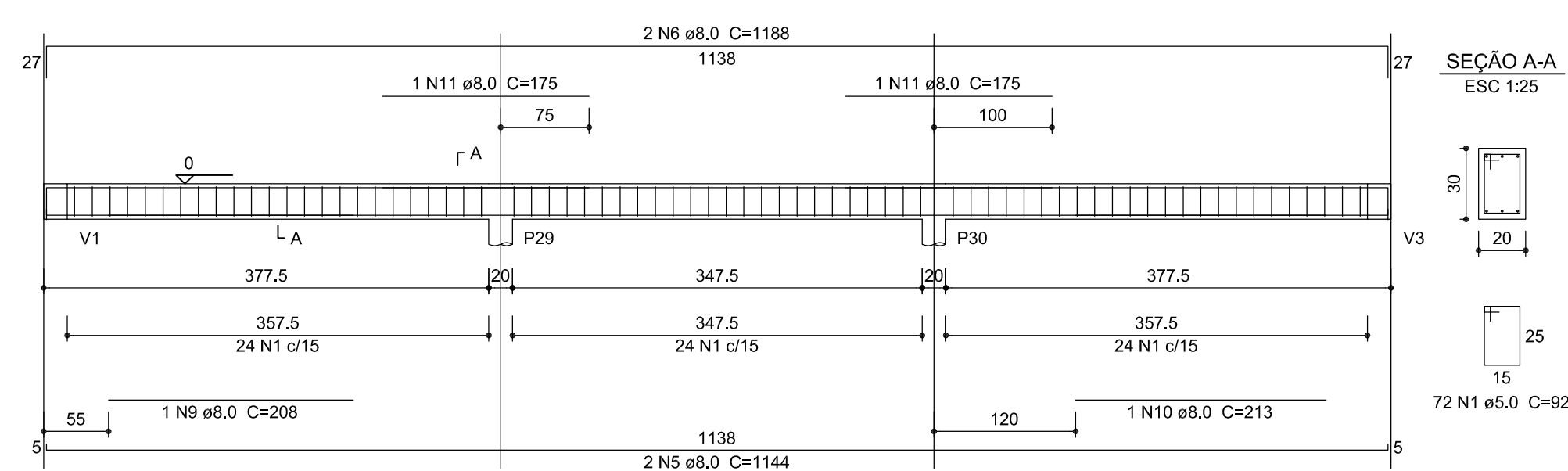
Resumo do aço - Esperas			
AÇO	DIAM (mm)	C.TOTAL (m)	PESO + 10 % (kg)
CA50	8,0	189,6	82,13
CA60	5,0	336,24	56,04
PESO TOTAL (kg)			
CA50	82,13		
CA60	56,04		



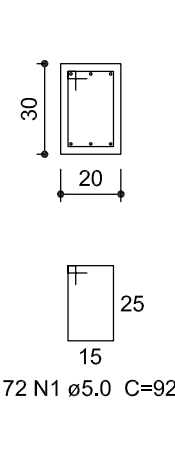
Resumo do aço - Baldrames			
AÇO	DIAM (mm)	C.TOTAL (m)	PESO + 10 % (kg)
CA50	8,0	364,8	158,3
CA60	5,0	448	76,1
PESO TOTAL (kg)			
CA50	158,3		
CA60	76,1		

Volume de concreto (C-25) = 5,01 m³

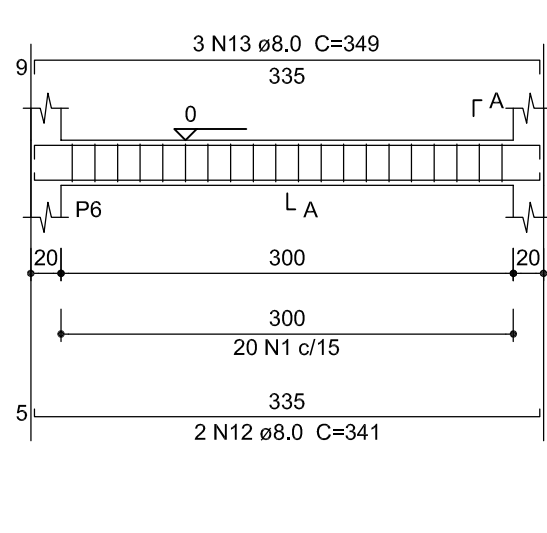
V5
ESC 1:50



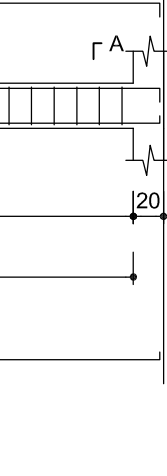
SEÇÃO A-A
ESC 1:25



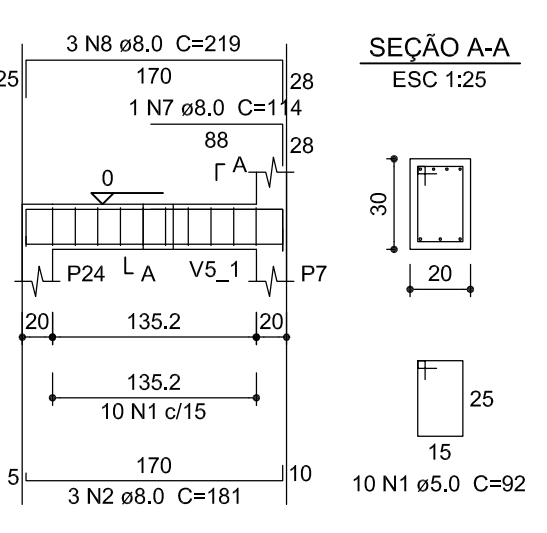
V6
ESC 1:50



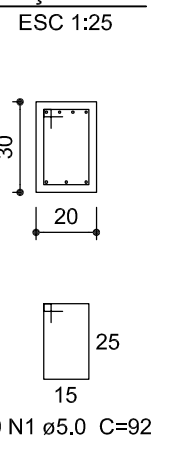
SEÇÃO A-A
ESC 1:25



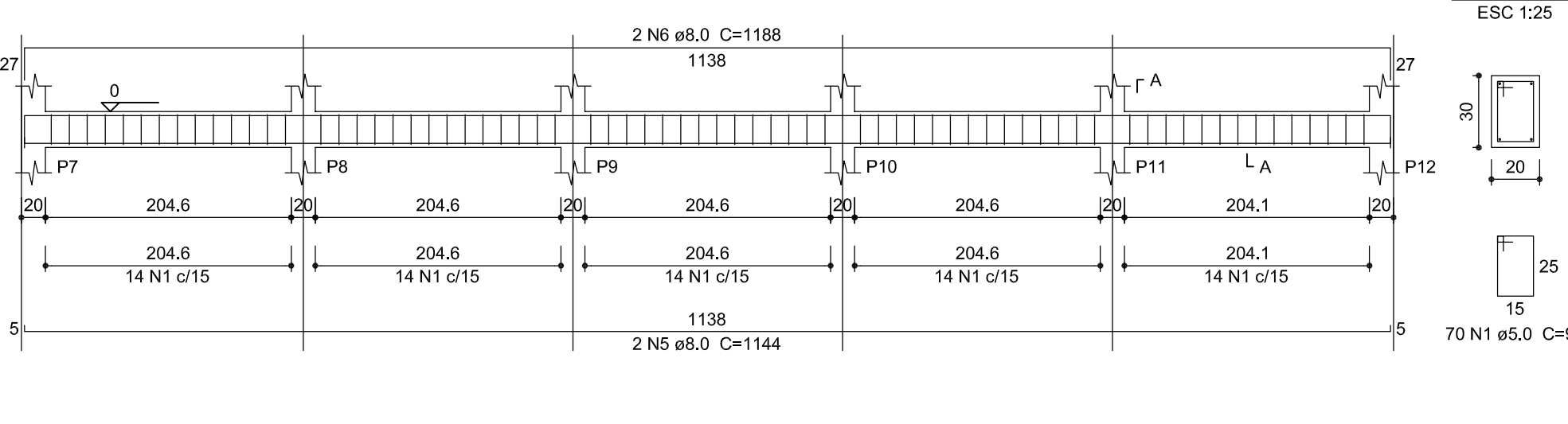
V1_1
ESC 1:50



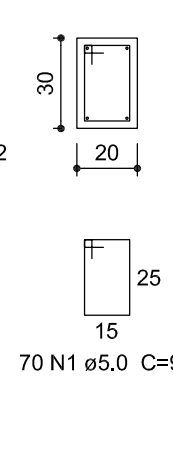
SEÇÃO A-A
ESC 1:25



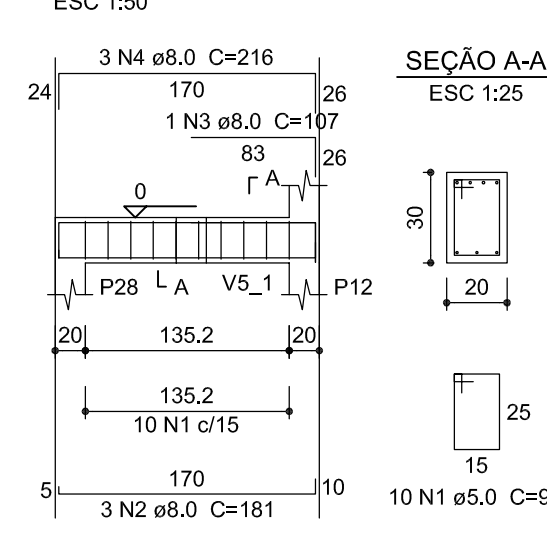
V2_1
ESC 1:50



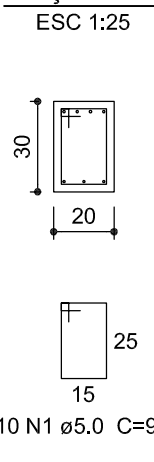
SEÇÃO A-A
ESC 1:25



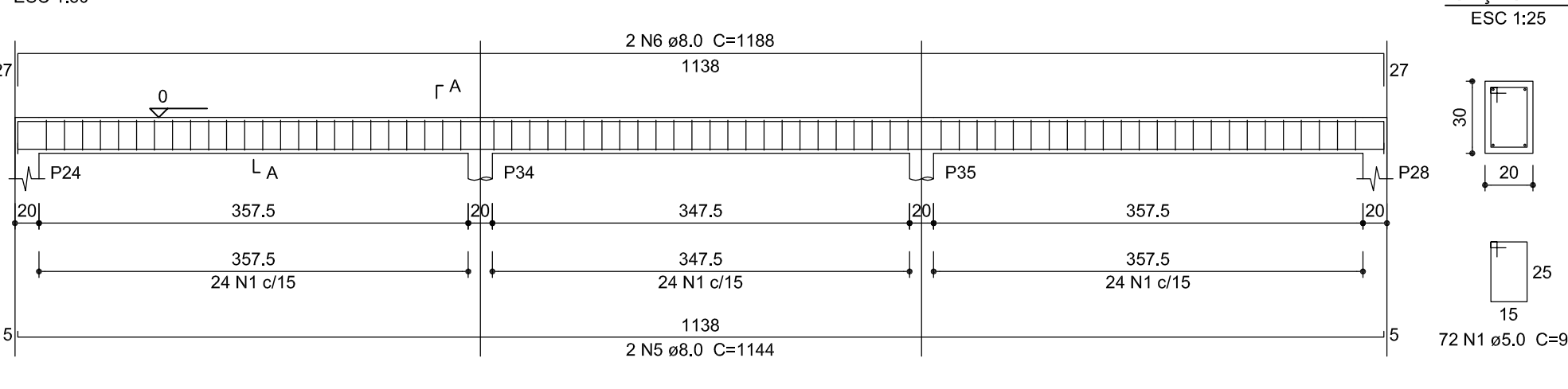
V3_1
ESC 1:50



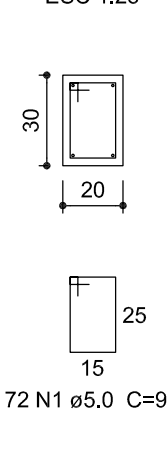
SEÇÃO A-A
ESC 1:25



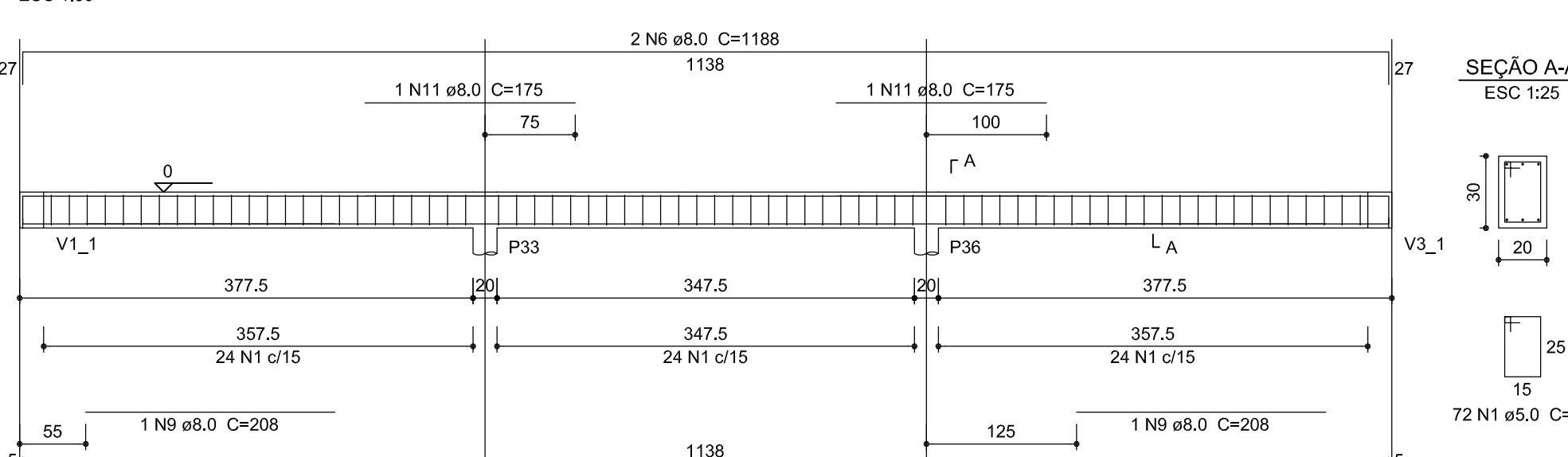
V4_1
ESC 1:50



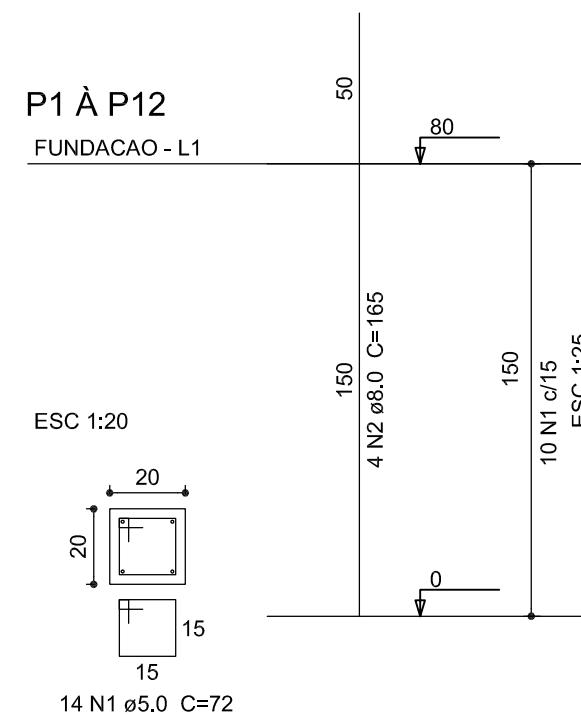
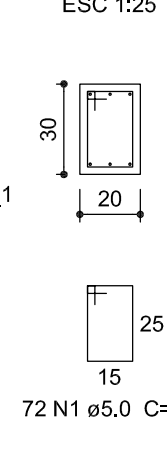
SEÇÃO A-A
ESC 1:25



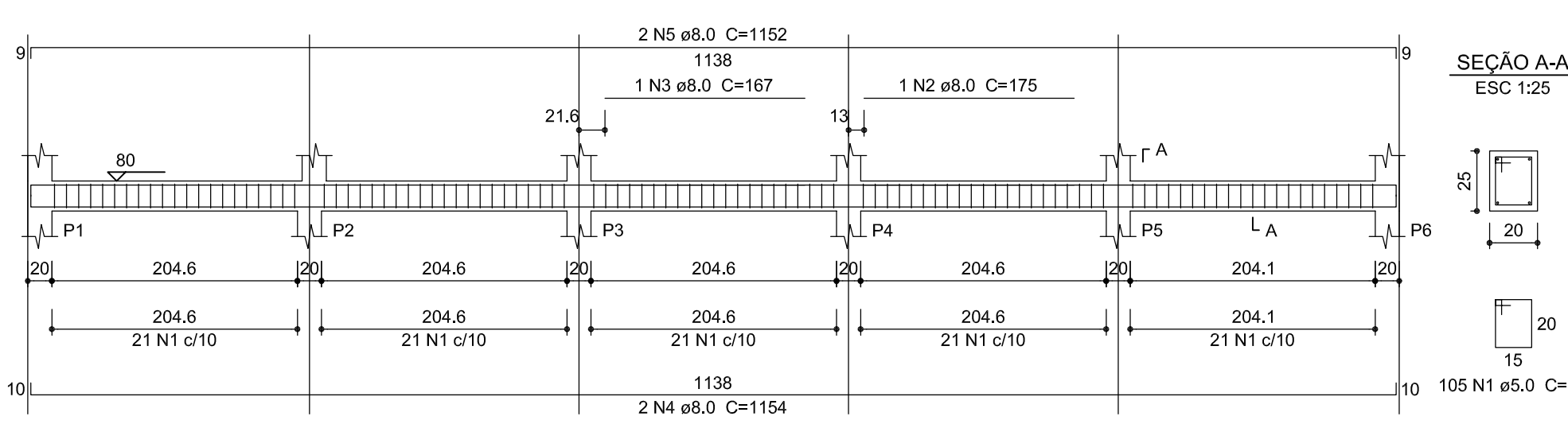
V5_1
ESC 1:50



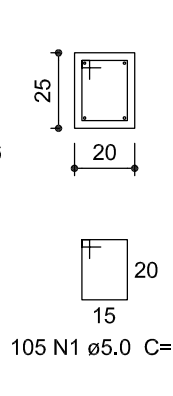
SEÇÃO A-A
ESC 1:25



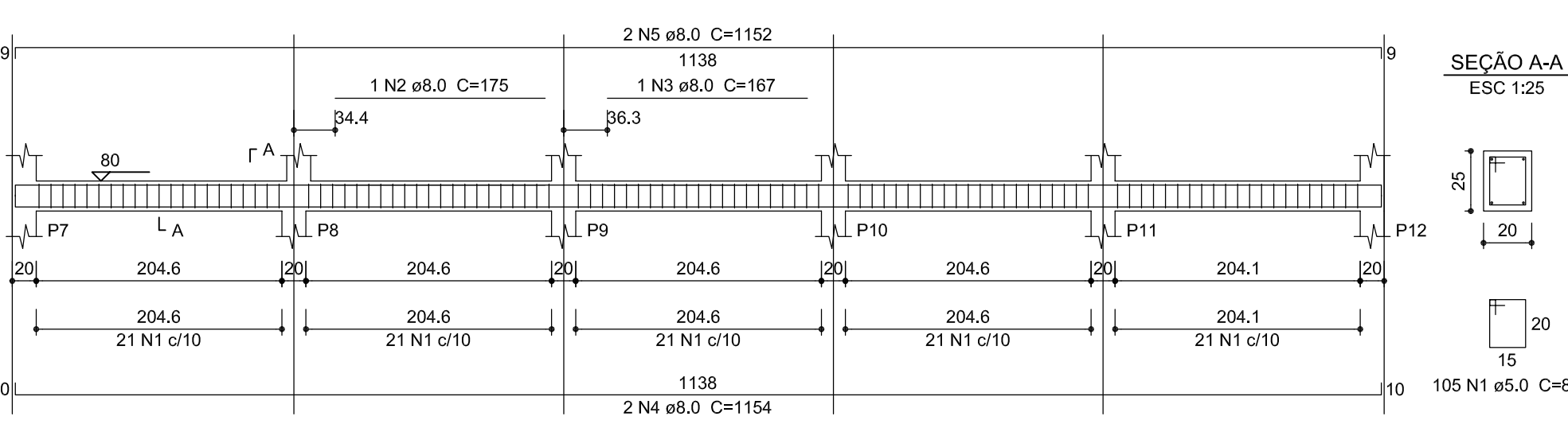
V1
ESC 1:50



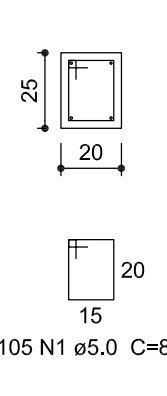
SEÇÃO A-A
ESC 1:25



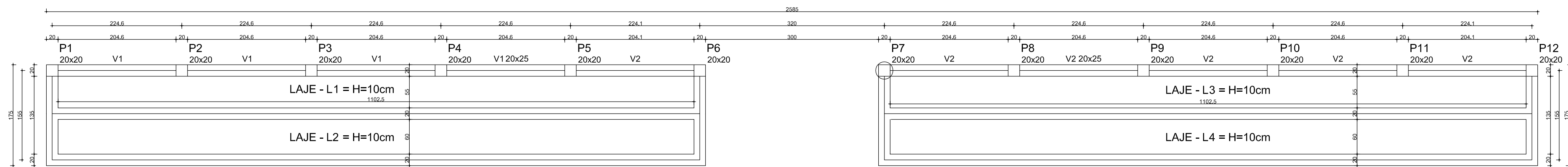
V2
ESC 1:50



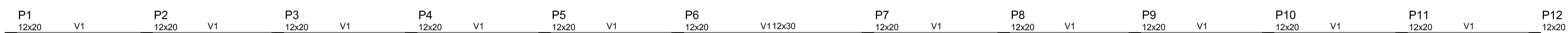
SEÇÃO A-A
ESC 1:25



Resumo do aço			
AÇO	DIAM (mm)	C.TOTAL (m)	PESO + 10 % (kg)
CA50	8,0	99,1	53,6
CA60	5,0	172,2	52,2
PESO TOTAL (kg)			
CA50	53,6		
CA60	52,2		

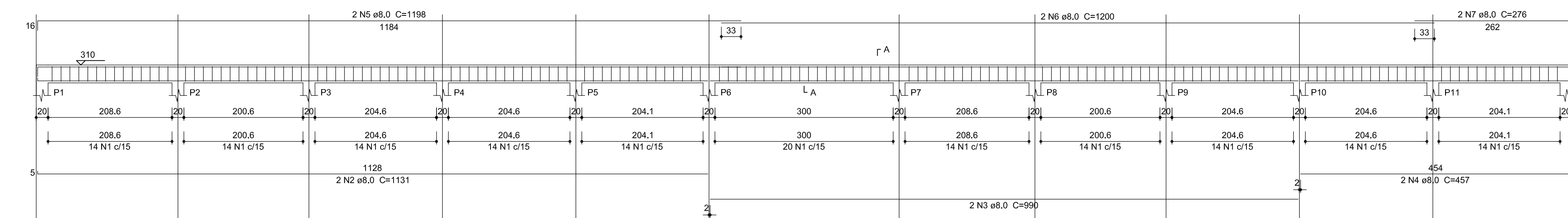


Forma das Lajes
Escala 1:50



Forma Respaldo Fechamento Fundos
Escala 1:50

V1
ESC 1:50



SEÇÃO A-A
ESC 1:25

