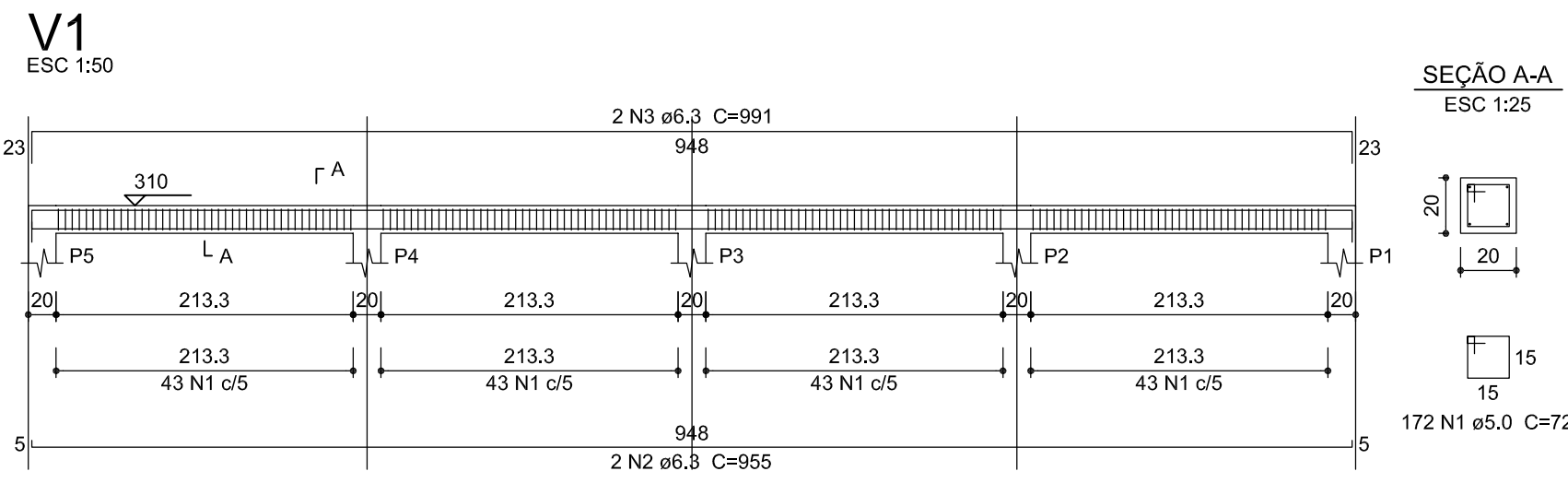
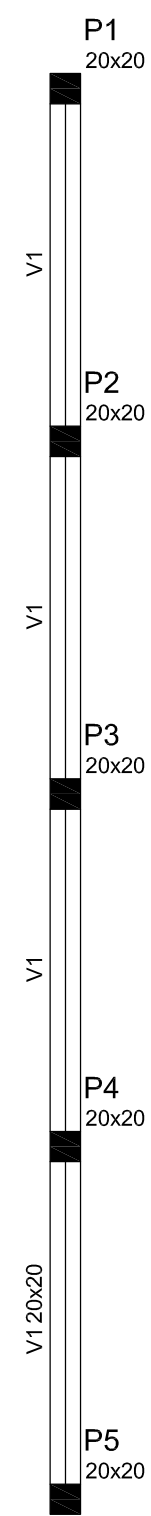
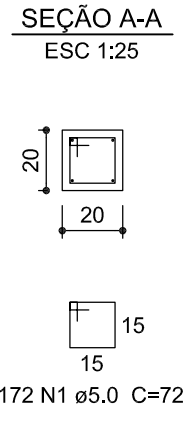
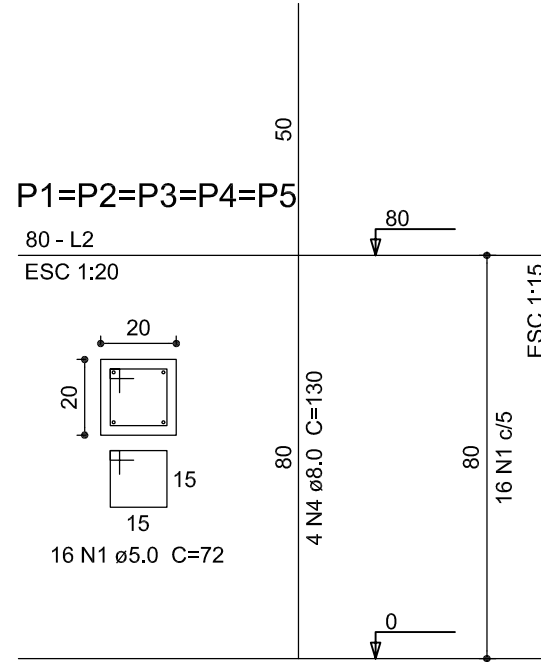
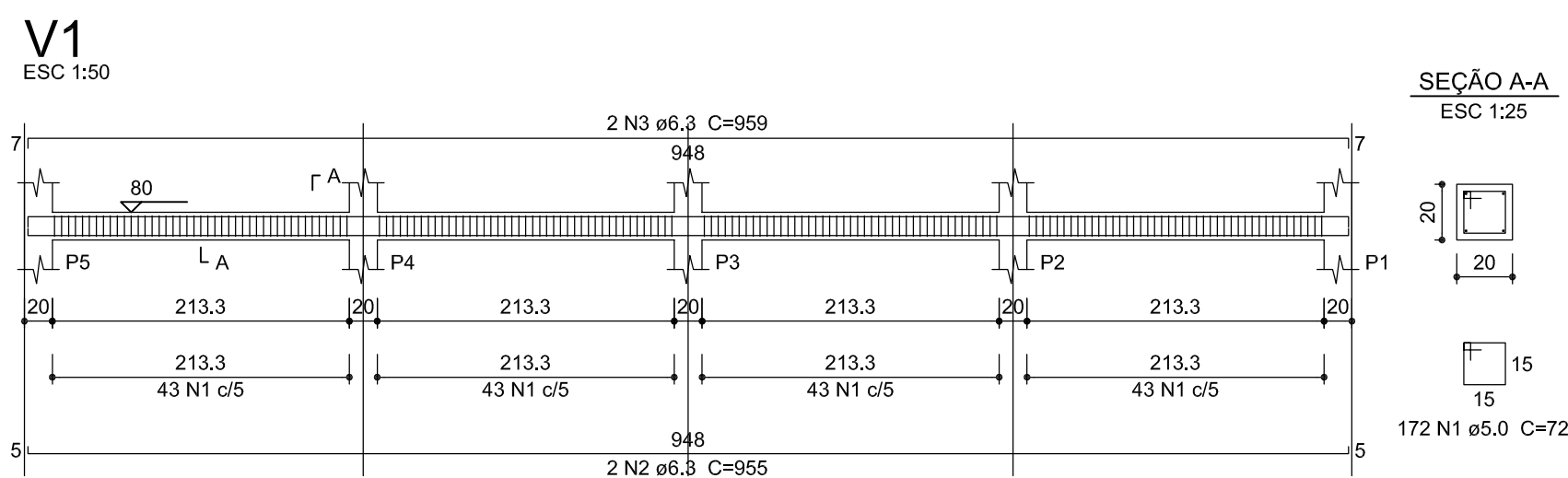


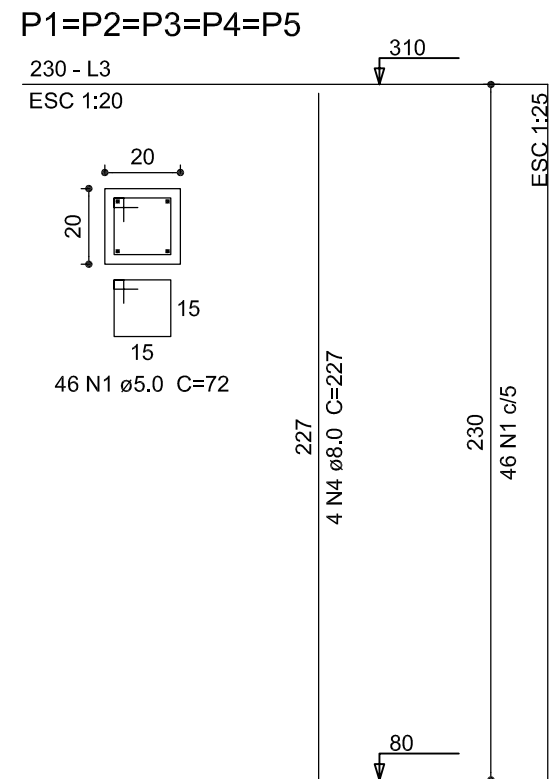
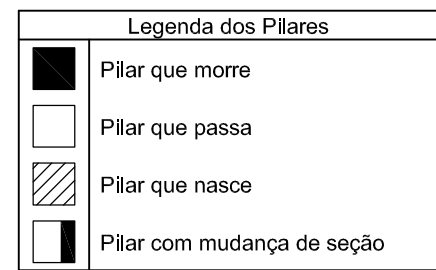
Resumo do aço			
AÇO	DIAM (mm)	C.TOTAL (m)	PESO + 10 % (kg)
CA50	6,3	38,3	10,3
CA60	8,0	26	11,3
CA60	5,0	181,5	30,8
PESO TOTAL (kg)			
CA50	21,6		
CA60	30,8		

Volume de concreto (C-25) = 0,54 m³
Área de forma = 8,92 m²

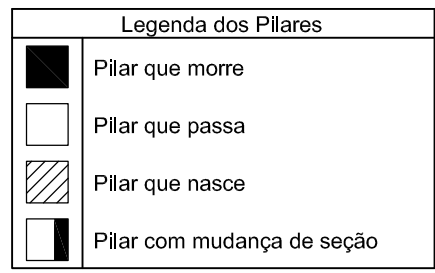
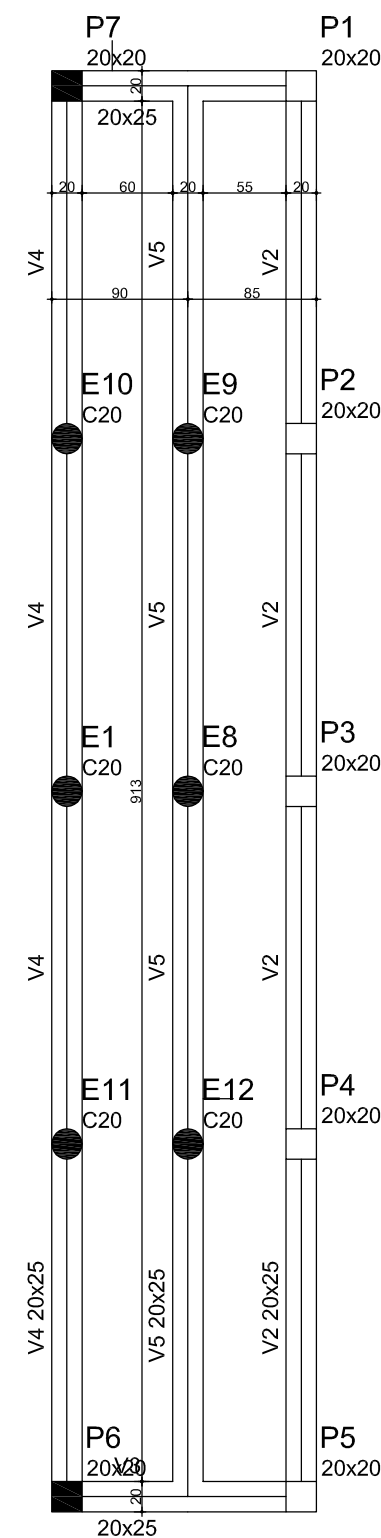


Resumo do aço			
AÇO	DIAM (mm)	C.TOTAL (m)	PESO + 10 % (kg)
CA50	6,3	39	10,5
CA50	8,0	45,4	19,7
CA60	5,0	289,5	49,1
PESO TOTAL (kg)			
CA50	30,2		
CA60	49,1		

Volume de concreto (C-25) = 0,84 m³
Área de forma = 14,92 m²

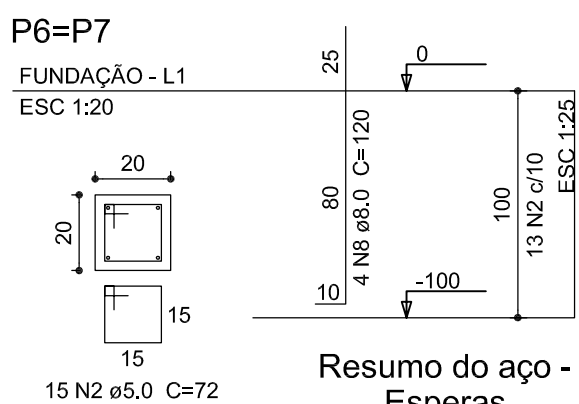
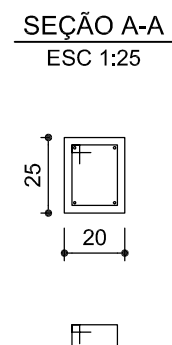
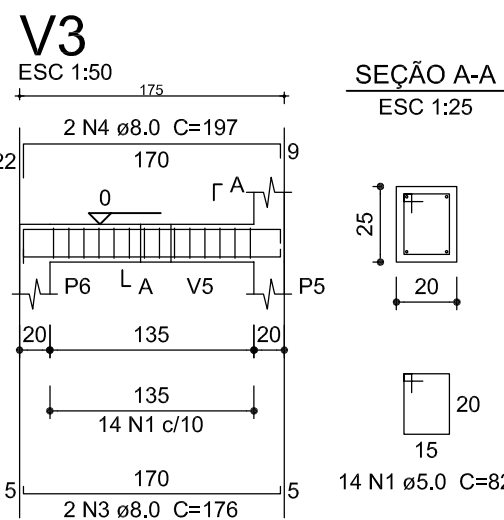
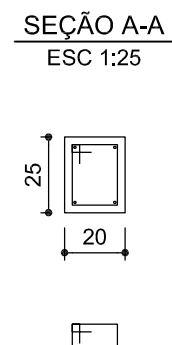
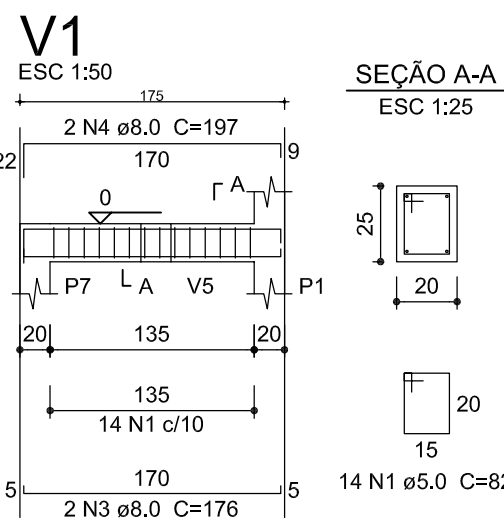
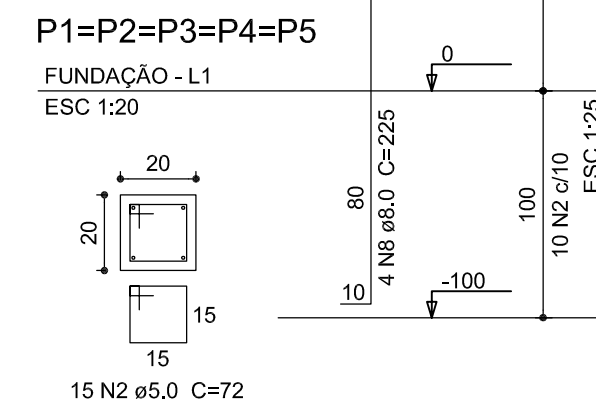


Forma do Nível +80cm
Escala 1:50



Resumo do aço - Baldramas			
AÇO	DIAM (mm)	C.TOTAL (m)	PESO + 10 % (kg)
CA50	8,0	130,9	56,8
CA60	5,0	236,5	40,1
PESO TOTAL (kg)			
CA50	56,8		
CA60	40,1		

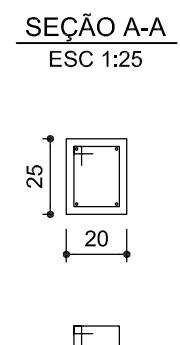
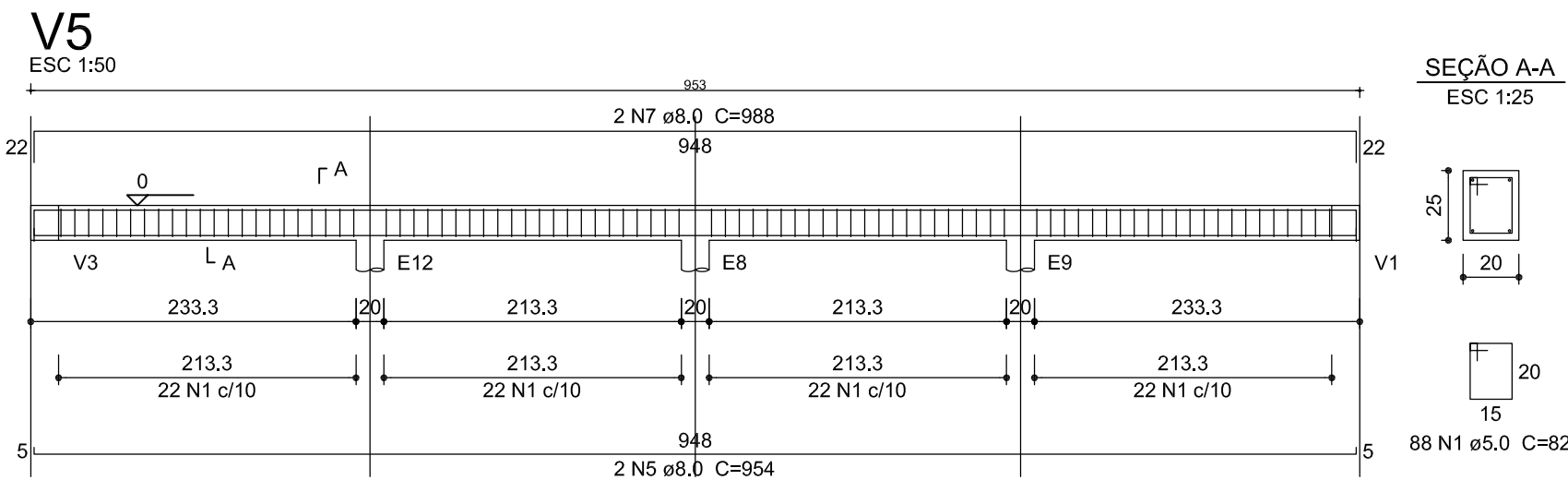
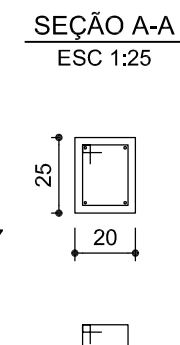
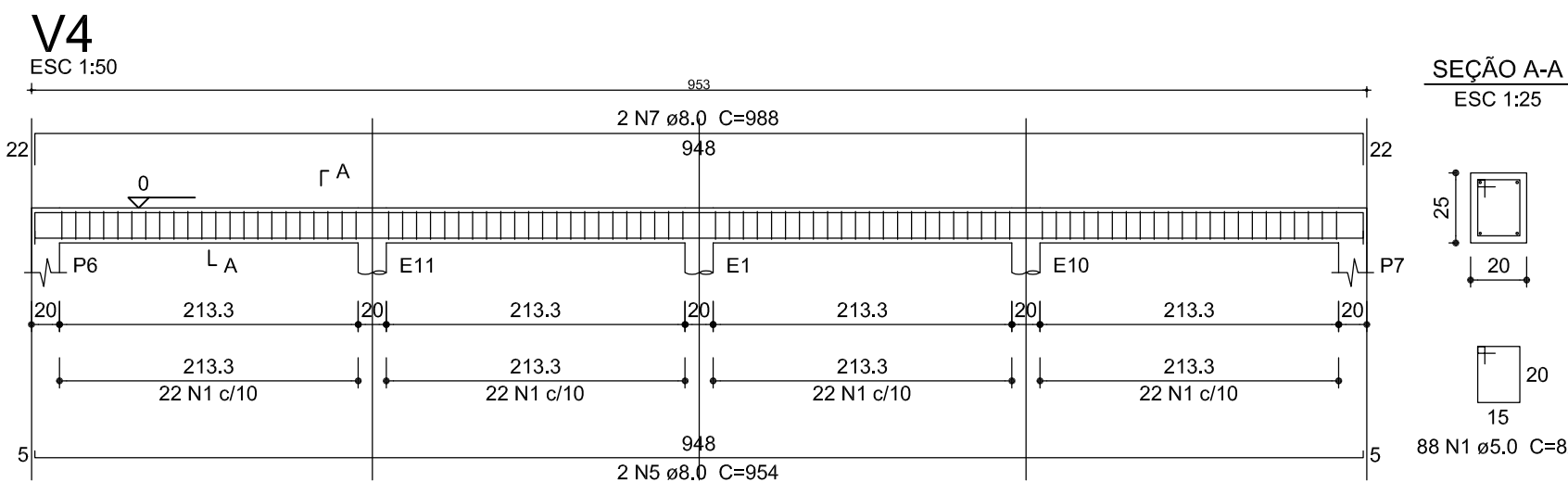
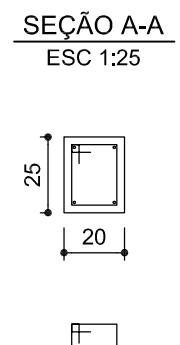
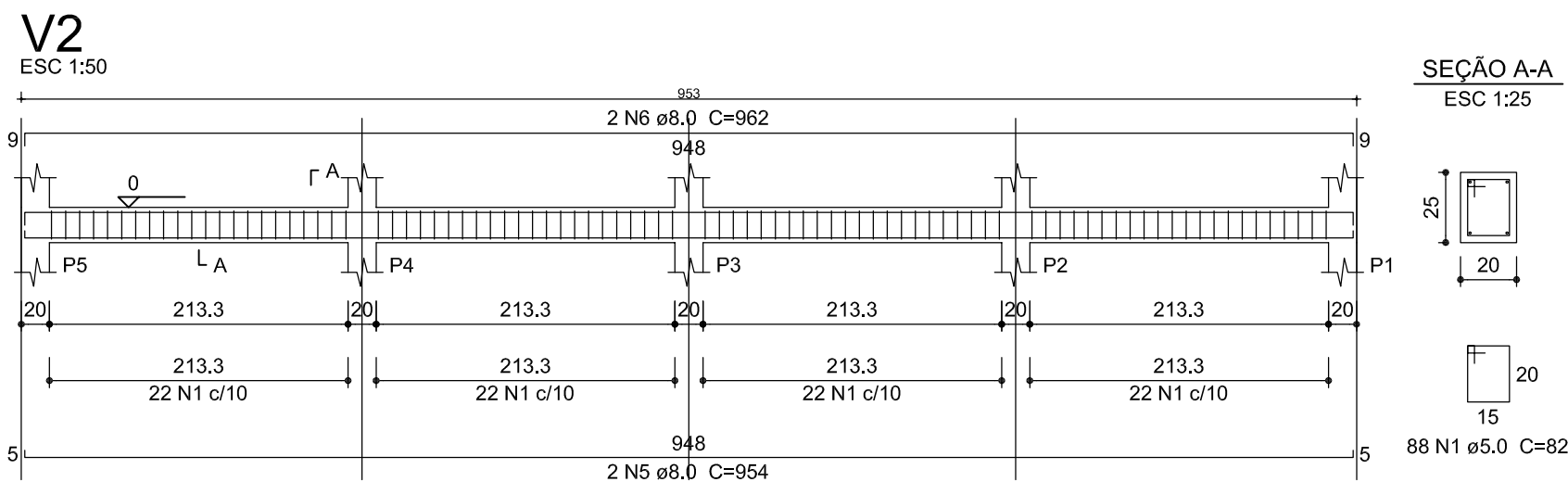
Volume de concreto (C-25) = 1,75 m³
Área de forma = 25,46 m²



Resumo do aço - Esperas			
AÇO	DIAM (mm)	C.TOTAL (m)	PESO + 10 % (kg)
CA50	8,0	61	26,5
CA60	5,0	74,5	12,6
PESO TOTAL (kg)			
CA50	26,5		
CA60	12,6		

Forma Fundação Arquibancada (Nível 0)
Escala 1:50

Forma do Nível +230
Escala 1:50



PROJETO ESTRUTURAL PARA CONSTRUÇÃO DE ARQUIBANCADA PARA A QUADRA POLIESPORTIVA NO BAIRRO LAGOINHA

Proprietário: PREFEITURA MUNICIPAL DE MONTE CARMELO

PROJETO ESTRUTURAL

Local:
BAIRRO LAGOINHA
MONTE CARMELO - MG

Situação

VER ARQUITETURA

Folha:

ÚNICA



CAD

ALAN JHON

Data

12/04/2018

Modificações

Visto

A.S.T.P.

ÁREAS

Conteúdo:

FORMA DA FUNDAÇÃO, VIGAS BALDRAMES E PILARETES.

VER ARQUITETURA

Proprietário

PREFEITURA MUNICIPAL DE MONTE CARMELO

Projeto/R.T.

ALAN JHON ALVES MARTINS - ENGENHEIRO CIVIL - CREA: 173.945/D



ALAN JHON
ENGENHEIRO CIVIL - CREA: 173.945/D-MG
RUA DOMINGOS LACERDA, 515 - SALA - 102
[34] 9107-2590 [34] 9647-0025 [34] 3817-2590

Aprovações